

RESEARCH ARTICLE

Open Access



# Comparison of volume-controlled ventilation mode and pressure-controlled ventilation with volume-guaranteed mode in the prone position during lumbar spine surgery

Jung Min Lee, Soo Kyung Lee, Kyung Mi Kim, You Jung Kim and Eun Young Park\*

## Abstract

**Background:** During lumbar spine surgery, patients are placed in the prone position for surgical access. The prone position has various effects on cardiac and pulmonary function, including a decreased cardiac index (CI), decreased dynamic lung compliance (C<sub>dyn</sub>), and increased peak inspiratory pressure (P<sub>peak</sub>). In this study, we compared the volume-controlled ventilation mode (VCV) and pressure-controlled ventilation with volume guaranteed mode (PCV-VG) based on hemodynamic and pulmonary variables in the prone position during lumbar spine surgery.

**Methods:** Thirty-six patients scheduled for lumbar spine surgery in the prone position were enrolled in this prospective, randomized clinical trial. The patients were randomly assigned to receive VCV or PCV-VG. Hemodynamic variables, respiratory variables, and arterial blood gases were measured in the supine position 15 min after the induction of anesthesia, 15 min after placement in the prone position, 30 min after placement in the prone position, and 15 min after placement in the supine position at the end of anesthesia.

**Results:** The hemodynamic variables and arterial blood gas results did not differ significantly between the two groups. Lower P<sub>peak</sub> values were observed in the PCV-VG group than in the VCV group ( $p = 0.045$ ). The C<sub>dyn</sub> values in the VCV group were lower than those in the PCV-VG group ( $p = 0.040$ ).

**Conclusion:** PCV-VG led to lower P<sub>peak</sub> and improved C<sub>dyn</sub> values compared with VCV, showing that it may be a favorable alternative mode of mechanical ventilation for patients in the prone position during lumbar spine surgery.

**Trial registration:** The study was retrospectively registered at [ClinicalTrials.gov](https://clinicaltrials.gov) (NCT 03571854). The initial registration date was 6/18/2018.

**Keywords:** Mechanical ventilation, General anesthesia, Spine surgery, Cardiac output

## Background

The prone position is commonly required to enable surgical access during lumbar spine surgery. When a patient moves into the prone position, inferior vena cava obstruction causes reduced venous return and increased thoracic pressure results in reduced left ventricular compliance, leading to a decreased cardiac index (CI) [1].

Pulmonary physiology is also influenced in the prone position. Although the V/Q mismatch is reduced and arterial oxygenation is improved in the prone position [2], lung compliance is reduced and the peak inspiratory pressure (P<sub>peak</sub>) increases to achieve the set tidal volume [3].

The volume-controlled ventilation mode (VCV) is commonly used during general anesthesia: the minute ventilation is fixed and airway pressure is influenced by pulmonary resistance or compliance [4]. The pressure-controlled ventilation with volume guaranteed mode

\* Correspondence: [parkey00@hanmail.net](mailto:parkey00@hanmail.net)

Department of Anesthesiology and Pain Medicine, Hallym University Sacred Heart Hospital, College of Medicine, Hallym University, 22, Gwanpyeong-ro 170beon-gil, Dongan-gu, Gyeonggi-do, 14068 Anyang-si, Republic of Korea



(PCV-VG) has recently been introduced in the field of anesthesiology. In this mode, the ventilator compares the tidal volume of the previous breath and automatically regulates the pressure limits to achieve a set tidal volume with the lowest airway pressure [5, 6].

In this randomized study, we tested the null hypothesis that VCV or PCV-VG does not affect hemodynamic or pulmonary variables during lumbar spine surgery in the prone position. The primary outcome of this study was Ppeak. The secondary outcomes were lung compliance and hemodynamic variables including cardiac output (CO), CI, stroke volume (SV), and stroke volume variation (SVV).

## Methods

This study was approved by the Institutional Review Board of Hallym University Sacred Heart Hospital. After written informed consent was obtained from all participants, 36 patients who were scheduled for lumbar spine surgery in the prone position were enrolled. Patients with morbid obesity (body mass index > 30 kg/m<sup>2</sup>), hypotension (systolic blood pressure < 100 mmHg), bradycardia (heart rate < 60 bpm), uncompensated cardiologic disease (heart failure, history of myocardial infarction, or heart block), hypoxia (PaO<sub>2</sub> < 60 mmHg or SpO<sub>2</sub> < 90%), uncontrolled asthma, or chronic obstructive pulmonary disease (forced expiratory volume in 1 s < 60%) were excluded. Patients who were younger than 20 years or older than 70 years were also excluded. This study was registered at [ClinicalTrials.gov](https://clinicaltrials.gov) (NCT 03571854). The study was conducted in accordance with the Consolidated Standards of Reporting Trials (CONSORT) 2010 statement [7].

All patients fasted for 8 h before surgery and were premedicated with intramuscular glycopyrrolate (0.2 mg). In the operating room, patients were monitored by non-invasive blood pressure, electrocardiography, and pulse oximetry (SpO<sub>2</sub>) before the induction of anesthesia. Anesthesia was induced with remifentanyl (0.1–0.2 µg/kg/min), propofol (1.5–2 mg/kg), and rocuronium (0.6 mg/kg), and maintained at a fractional inspired oxygen concentration of 0.5 with sevoflurane (2.0–2.5 vol%), remifentanyl (0.05–0.3 µg/kg/min), and vecuronium (0.03–0.05 mg/kg/h). The patients were ventilated with a Datex-Ohmeda Ventilator (S/S AVANCE) and randomly assigned to receive either VCV (*n* = 18) or PCV-VG (*n* = 18) using a computer-generated randomization method. The tidal volume in both groups was set to deliver 8 mL/kg of ideal body weight. The respiratory rate (RR) was adjusted to maintain an end tidal CO<sub>2</sub> (ETCO<sub>2</sub>) level of 33–38 mmHg, and the inspiratory to expiratory time (I:E) ratio was 0.5. After the induction of anesthesia, a 20 G catheter was inserted into the radial artery to monitor continuous arterial pressure

and connected to the FloTrac®/Vigileo system (Edwards Lifesciences Corp., Irvine, CA) for the continuous monitoring of variables, including CO, CI, SV, stroke volume index (SVI), and SVV.

Hemodynamic variables, respiratory variables, and arterial blood gases were measured in the supine position 15 min after the induction of anesthesia, 15 min after placement in the prone position, 30 min after placement in the prone position, and 15 min after placement in the supine position at the end of anesthesia. The measured hemodynamic variables included mean arterial pressure (MAP), heart rate (HR), CO, CI, SV, SVI, and SVV. Respiratory variables included RR, Ppeak, mean inspiratory pressure (Pmean), SpO<sub>2</sub>, ETCO<sub>2</sub>, and dynamic lung compliance (Cdyn).

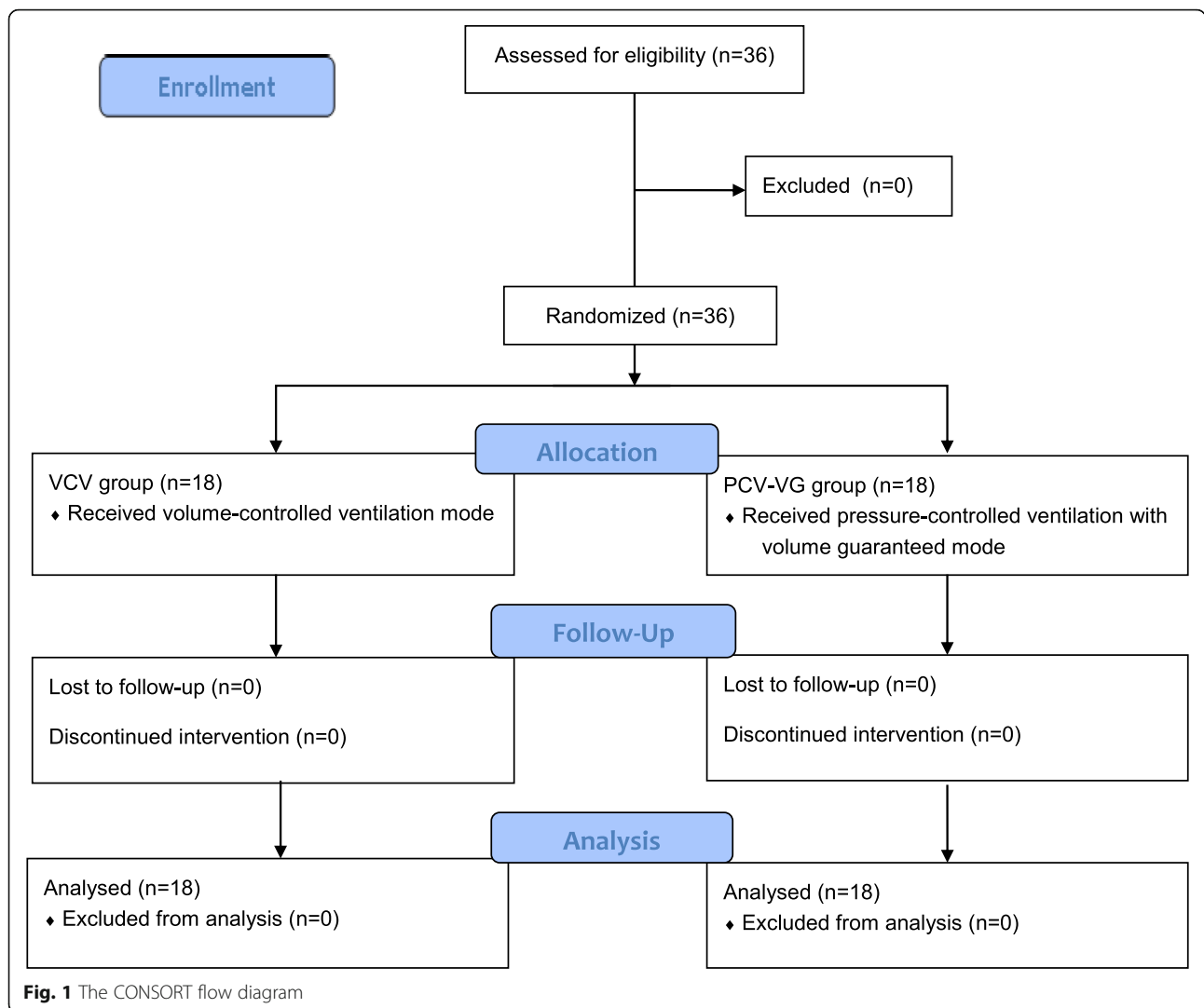
As there have been no previous studies comparing the effects of PCV-VG and VCV during surgery in the prone position, the sample size for this study was determined in a pilot study. The results indicated a mean difference in Ppeak between the two modes of 10% ( $\alpha = 0.05$ , power = 80%, effect size = 1.007). Assuming a 20% dropout rate, 18 patients were included in each group in this study.

All data are presented as the median (interquartile range) or number of patients. Hemodynamic and respiratory data were analyzed with a repeated-measures analysis of variance, and differences between groups at the same time point were analyzed with the two-sample *t*-test or Mann-Whitney U test; *p*-values < 0.05 were considered statistically significant. Statistical analyses were performed using the Statistical Package for the Social Sciences version 24.0 (IBM Corp., Armonk, NY).

## Results

A total of 36 patients were enrolled in this study and a CONSORT flow diagram is shown in Fig. 1. There were no significant differences between the groups in patient characteristics (Table 1). Among the respiratory variables, Ppeak increased after placement in the prone position during surgery and in the supine position at the end of anesthesia in both groups, and there were lower Ppeak values in the PCV-VG group than in the VCV group throughout the study period (*p* = 0.045, Fig. 2). The Cdyn values at the later three time points were lower than the initial values in both groups, and Cdyn was lower in the VCV group than in the PCV-VG group throughout the study period (*p* = 0.040, Fig. 3). Pmean increased after placement in the prone position in both groups, and there was no significant intergroup difference in Pmean over time during surgery (Table 2).

HR decreased after placement in the prone position in both groups, but no significant intergroup



difference was present. CO and CI did not differ significantly between groups, while the CO and CI values decreased 15 min after placement in the prone position (Table 3). The blood gas results did not differ between groups (Table 4).

**Table 1** Patient characteristics

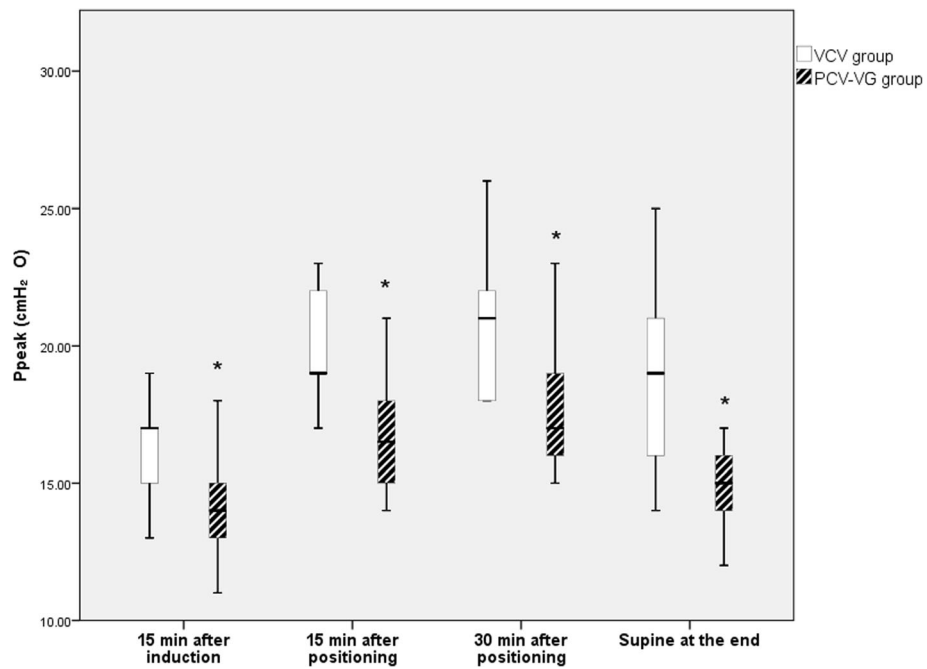
	VCV (n = 18)	PCV-VG (n = 18)
Age (years)	50.0 (41–60)	56 (52–61)
Male/female	11/7	11/7
BMI (kg/m <sup>2</sup> )	24.1 (22.4–26.8)	24.5 (22.6–27.4)
ASA PS classification (I/II/III)	5/9/4	2/13/3
Duration of anesthesia (min)	240 (176–280)	295 (204–341)
Duration of surgery (min)	163 (108–196)	223 (115–244)

BMI body mass index, ASA PS classification, American Society of Anesthesiologists physical status classification, VCV volume-controlled ventilation, PCV-VG pressure-controlled ventilation with volume guaranteed. Data are listed as the median (interquartile range) or number of patients

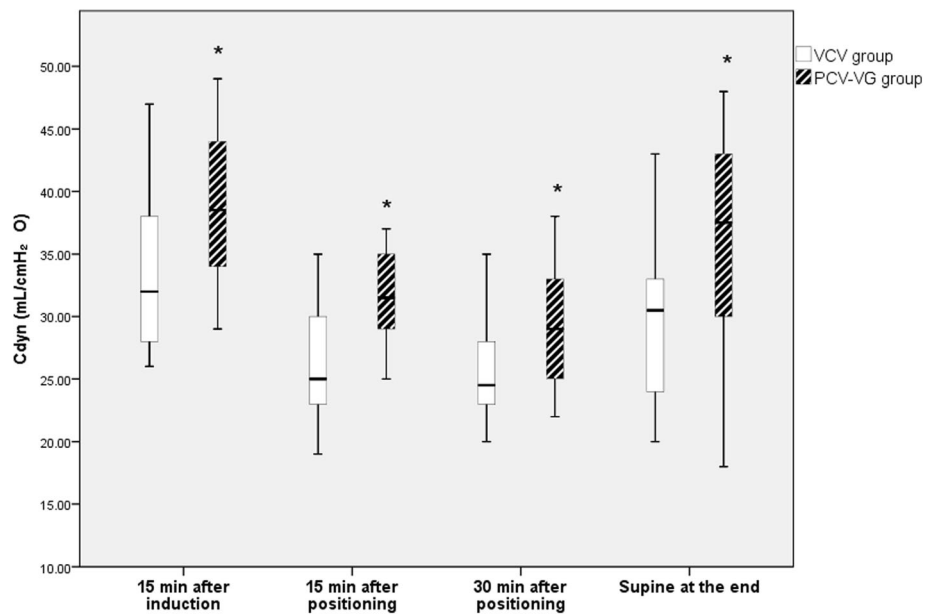
**Discussion**

In the present study, we compared the effects of the VCV and PCV-VG on hemodynamic and pulmonary variables in the prone position. In VCV, the ventilator delivers a target volume with a constant flow and the airway pressure increases in a linear manner. This approach ensures minute ventilation regardless of airway compliance but cannot control airway pressure [8]. Compared with VCV, the pressure-controlled ventilation mode (PCV) provides the tidal volume at a preset pressure with decelerating flow, and the tidal volume can be varied depending on lung compliance [9]. PCV-VG delivers a target tidal volume with a decelerating flow and calculates lung compliance to adjust the inspiratory pressure based on the previous breath [6, 8]. It reaches the target volume with the lowest inspiratory pressure and has the benefits of both VCV and PCV [9].

Several studies have examined the effects of the PCV-VG compared with conventional modes (VCV or PCV).



**Fig. 2** Peak airway pressure at each measurement timepoint in each group. Data are displayed as ranges, medians, and interquartile ranges. VCV, volume controlled ventilation; PCV-VG, pressure-controlled ventilation with volume guaranteed mode. \* $p < 0.05$  compared with the VCV group at the same time point



**Fig. 3** Dynamic lung compliance at each measurement timepoint in each group. Data are displayed as ranges, medians, and interquartile ranges. VCV, volume-controlled ventilation, PCV-VG, pressure-controlled ventilation with volume guaranteed. \* $p < 0.05$  compared with the VCV group at the same time point

**Table 2** Respiratory variables

	Group	15 min after induction	15 min after positioning	30 min after positioning	Supine at the end
Ppeak (cmH <sub>2</sub> O)	VCV	17 (15–17)	19 (19–22)†	21 (18–22)†	19 (16–22)†
	PCV-VG	14 (13–15)*	17 (15–18)*†	17 (16–19)*†	15 (14–16)*
Pmean (cmH <sub>2</sub> O)	VCV	7 (6–7)	7 (7–8)†	8 (7–8)†	7 (6–8)
	PCV-VG	7 (6–7)	7 (7–8)†	8 (7–9)†	7 (7–8)
RR (breaths/min)	VCV	12 (12–14)	11 (10–12)	12 (10–12)	12 (10–13)
	PCV-VG	12 (11–13)	12 (10–12)	12 (10–12)	11 (10–13)
Cdyn (mL/cmH <sub>2</sub> O)	VCV	32 (28–39)	25 (23–30)†	25 (23–28)†	31 (24–33)†
	PCV-VG	39 (34–44)*	32 (29–35)*†	29 (25–33)*†	38 (30–43)*†
ETCO <sub>2</sub> (mmHg)	VCV	33 (31–34)	32 (30–33)	32 (30–35)	34 (31–35)
	PCV-VG	31 (30–33)	32 (31–34)	32 (30–34)	33 (31–35)
SaO <sub>2</sub> (%)	VCV	99 (98–100)	99 (98–99)	99 (98–100)	99 (99–100)
	PCV-VG	99 (98–100)	99 (98–100)	99 (98–100)	99 (99–100)

Ppeak peak inspiratory pressure, Pmean mean inspiratory pressure, RR respiratory rate, Cdyn dynamic compliance, ETCO<sub>2</sub> end tidal CO<sub>2</sub>, VCV volume-controlled ventilation, PCV-VG pressure-controlled ventilation with volume guaranteed

Data are listed as the median (interquartile range)

\**p* < 0.05 compared with the VCV group at the same time point

†*p* < 0.05 compared with 15 min after induction in each group

In thoracic surgery with one-lung ventilation, PCV-VG led to lower Ppeak, peak plateau pressure, and Pmean values compared with VCV [10, 11]. Similar results were obtained in a laparoscopic surgery study that showed lower Ppeak values with PCV-VG than with VCV [6, 9, 12].

Spine surgery is commonly performed with patients in the prone position. In respiratory physiology, Ppeak increases and Cdyn decreases as increased intra-thoracic pressure and abdominal pressure compromise diaphragm movement when a patient is turned to the prone

position [3, 4, 13, 14]. To our knowledge, no previous study has compared VCV and PCV-VG in the prone position. However, several studies have compared PCV and VCV for patients undergoing posterior lumbar surgery and found that PCV is associated with lower Ppeak values compared with VCV [13, 14].

Pmean correlates with alveolar ventilation and improved oxygenation [15]. Although the values for patients in the prone position were higher than for patients in the supine position in both groups, placement in the prone position

**Table 3** Hemodynamic variables

	Group	15 min after induction	15 min after positioning	30 min after positioning	Supine at the end
MAP (mmHg)	VCV	89 (80–100)	86 (77–98)	82 (75–90)	106 (88–109)
	PCV-VG	92 (71–102)	83 (72–93)	82 (73–94)	91 (80–98)
HR (beats/min)	VCV	78 (65–82)	68 (56–71)†	66 (61–69)†	71 (65–89)
	PCV-VG	70 (63–73)	63 (58–69)†	61 (56–67)†	73 (63–93)†
CO (L/min)	VCV	4.7 (3.8–5.7)	4.0 (3.2–4.7)†	4.1 (3.2–4.8)	5.4 (3.7–7.3)
	PCV-VG	4.2 (3.7–4.4)	3.6 (3.3–4.0)†	3.7 (3.3–4.2)	4.6 (4.0–5.7)†
CI (L/min/m <sup>2</sup> )	VCV	2.8 (2.2–3.1)	2.3 (1.9–2.7)†	2.4 (1.7–2.9)	3.2 (2.4–3.3)
	PCV-VG	2.4 (2.2–2.6)	2.3 (1.8–2.4)†	2.2 (1.9–2.6)	2.8 (2.4–3.3)†
SV (mL/beat)	VCV	63 (54–75)	56 (46–74)	57 (47–71)	67 (56–84)
	PCV-VG	57 (55–65)	59 (51–66)	59 (53–65)	66 (54–78)
SVI (mL/m <sup>2</sup> /beat)	VCV	37 (32–41)	33 (29–39)	34 (26–40)	38 (32–51)
	PCV-VG	34 (32–39)	34 (31–40)	36 (32–40)	39 (32–44)
SWV (%)	VCV	11 (9–14)	12 (10–16)	11 (9–17)	10 (6–13)
	PCV-VG	12 (8–14)	13 (10–15)	13 (10–15)	9 (8–15)

MAP mean arterial pressure, HR heart rate, CO cardiac output, CI cardiac index, SV stroke volume, SVI stroke volume index, SWV stroke volume variation, VCV volume controlled ventilation, PCV-VG, pressure controlled ventilation with volume guaranteed

Data are listed as the median (interquartile range)

†*p* < 0.05 compared with 15 min after induction in each group

**Table 4** Arterial blood gas analyses

	Group	15 min after induction	15 min after positioning	30 min after positioning	Supine at the end
pH	VCV	7.44 (7.42–7.45)	7.44 (7.41–7.47)	7.44 (7.42–7.46)	7.42 (7.38–7.45)
	PCV-VG	7.43 (7.41–7.48)	7.43 (7.42–7.45)	7.42 (7.40–7.47)	7.41 (7.39–7.45)
PaO <sub>2</sub> (mmHg)	VCV	242 (209–285)	252 (237–271)	258 (234–272)	216 (192–255)
	PCV-VG	209 (177–248)	234 (215–260)	233 (218–259)	230 (215–262)
PaCO <sub>2</sub> (mmHg)	VCV	32 (30–34)	31 (30–33)	31 (30–33)	34 (31–36)
	PCV-VG	34 (31–35)	33 (31–35)	34 (31–35)	35 (32–38)
SaO <sub>2</sub> (%)	VCV	99.9 (99.8–99.9)	99.9 (99.8–99.9)	99.9 (99.8–99.9)	99.8 (99.7–99.9)
	PCV-VG	99.8 (99.6–99.9)	99.9 (99.8–99.9)	99.8 (99.8–99.9)	99.8 (99.8–99.9)

PaO<sub>2</sub> partial arterial oxygen tension, PaCO<sub>2</sub> partial arterial carbon dioxide tension, VCV volume-controlled ventilation, PCV-VG pressure-controlled ventilation with volume guaranteed  
Data are listed as the median (interquartile range)

did not significantly improve oxygenation. One previous study found similar results; the authors attributed them to a lack of positive end-expiratory pressure [14].

It is known that the CI decreases when a patient moves in the prone position. This is caused by reduced venous return and increased intra-thoracic pressure, which results in decreased arterial filling and reduced ventricular compliance [1]. Dharmavaram et al. [16] compared the effects of prone positioners on hemodynamic values using transesophageal echocardiography (TEE). They found that decreases in CI in the prone position resulted from a decreased SV. This effect seemed to be caused by increased afterload rather than decreased preload because the left ventricle end-diastolic area was not significantly altered. Blood flow through the mitral valve was reduced on TEE, suggesting that reduced chest wall compliance diminished diastolic function and increased afterload. The Jackson table had less effect on cardiac function than the Wilson frame.

In the present study, the CO and CI values measured 15 min after placement in the prone position were lower compared with the same values measured in the supine position. The SV values did not significantly change as patients were positioned on the Jackson table, so it is thought that the decreased CO and CI in the prone position may have been caused by a decreased HR, rather than decreased preload or increased afterload.

It can be expected that differences in Ppeak between VCV and PCV-VG will affect pleural pressure, inducing changes in the cardiovascular response [17]. However, we noted no significant hemodynamic change between VCV and PCV-VG. An animal study comparing the effects of VCV and PCV on anesthetized dogs showed that hemodynamic functions such as CO, CI, and SVI did not differ significantly between VCV and PCV, although the Ppeak was higher in VCV than in PCV [18]. Balick-Weber et al. [19] used TEE to compare the effects of VCV and PCV on cardiac function and found that there was no echocardiographic change in right ventricular

SV, left ventricular preload, or left ventricle end-systolic wall stress. They concluded that Ppeak was not associated with cardiac function and that the main determinant of right ventricle afterload was transpulmonary pressure rather than Ppeak.

The present study has several limitations. First, although the FloTrac®/Vigileo system is widely used in anesthesia, it is an uncalibrated pulse contour analysis and may be less accurate under conditions such as sepsis or reduced systemic vascular resistance [20]. Grensemann et al. [21] reported that the FloTrac®/Vigileo system had a clinically unacceptable high degree of error in the prone position compared with transpulmonary thermodilution techniques and calibrated pulse contour CO analysis. We believed that the transpulmonary thermodilution technique using a pulmonary catheter would be more invasive than pulse contour analysis. As a calibrated pulse contour analysis device was not available in our center, we used an uncalibrated pulse contour analysis device as a less invasive means of measuring hemodynamic variables. Since patients in the previous study were mechanically ventilated with acute respiratory distress syndrome or acute lung injury and expected to be in a septic condition or undergoing vasopressor treatment, the effect of placement in the prone position on uncalibrated CO analysis in healthy volunteers warrants further evaluation. Second, patients with compromised cardiac or pulmonary diseases, as well as those with morbid obesity, were excluded from the study. Respiratory mechanics or hemodynamics may be affected by various lung conditions and we wanted to standardize lung function among the patients. Although there were statistically significant differences between VCV and PCV-VG for Ppeak and Cdyn, these differences were quite small and may have been more prominent for patients with pulmonary disease or morbid obesity. Additional studies are therefore needed to compare the hemodynamic and respiratory effects of VCV and PCV-VG in patients with uncompensated cardiac and

pulmonary function or morbid obesity. Third, we measured C<sub>dyn</sub> rather than static lung compliance. Static lung compliance does not depend on inspiratory flow and is influenced by the elastic properties of the lung [22]. However, the inspiratory hold maneuver was not available in the ventilator we used, and there may have been detrimental effects on oxygenation while disconnecting the circuit to measure the plateau pressure.

## Conclusion

In conclusion, PCV-VG provided a lower P<sub>peak</sub> and improved C<sub>dyn</sub> compared with VCV, and was not associated with significant differences in CO, CI, SV, SVV, and oxygenation. These results show that PCV-VG may be an effective alternative mode of mechanical ventilation for patients in the prone position during lumbar spine surgery. Additional studies are required to evaluate the effects of P<sub>peak</sub> on postoperative patient outcome.

## Abbreviations

C<sub>dyn</sub>: Dynamic lung compliance; CI: Cardiac index; CO: Cardiac output; ETCO<sub>2</sub>: End tidal carbon dioxide; PaO<sub>2</sub>: Arterial oxygen partial pressure; PCV: Pressure-controlled ventilation; PCV-VG: Pressure-controlled ventilation with volume guaranteed mode; P<sub>mean</sub>: Mean inspiratory pressure; P<sub>peak</sub>: Peak inspiratory pressure; RR: Respiratory rate; SV: Stroke volume; SVI: Stroke volume index; SVV: Stroke volume variation; VCV: Volume-controlled ventilation mode

## Acknowledgments

Not applicable.

## Authors' contributions

LJM participated in the study design, and data analysis, and drafted the manuscript. LSK and KKM performed the study and collected data. KYJ participated in patient recruitment and data collection. PEY participated in the study design and drafted the manuscript. All authors have read and approved the final manuscript.

## Funding

Not applicable.

## Availability of data and materials

The data and materials are available from the corresponding author on reasonable request.

## Ethics approval and consent to participate

This study was approved by the Institutional Review Board of Hallym University Sacred Heart Hospital and registered at [clinicaltrials.gov](http://clinicaltrials.gov) (NCT 03571854). Written informed consent was obtained from all participants prior to inclusion in the study.

## Consent for publication

Not applicable.

## Competing interests

The authors declare that they have no competing interests.

Received: 12 January 2019 Accepted: 18 July 2019

Published online: 27 July 2019

## References

- Edgcombe H, Carter K, Yarrow S. Anaesthesia in the prone position. *Br J Anaesth.* 2008;100:165–83.
- Chui J, Craen RA. An update on the prone position: continuing professional development. *Can J Anaesth.* 2016;63:737–67.

- Palmon SC, Kirsch JR, Depper JA, Toung TJ. The effect of the prone position on pulmonary mechanics is frame-dependent. *Anesth Analg.* 1998;87:1175–80.
- Şenay H, Sivacı R, Kokulu S, Koca B, Baki ED, Ela Y. The effect of pressure-controlled ventilation and volume-controlled ventilation in prone position on pulmonary mechanics and inflammatory markers. *Inflammation.* 2016;39:1469–74.
- Keszler M. Volume-targeted ventilation. *Early Hum Dev.* 2006;82:811–8.
- Dion JM, McKee C, Tobias JD, Sohner P, Herz D, Teich S, et al. Ventilation during laparoscopic-assisted bariatric surgery: volume-controlled, pressure-controlled or volume-guaranteed pressure-regulated modes. *Int J Clin Exp Med.* 2014;7:2242–7.
- Schulz KF, Altman DG, Moher D, group C. CONSORT 2010 statement: updated guidelines for reporting parallel group randomized trials. *Ann Intern Med.* 2010;152:726–32.
- Ball L, Dameri M, Pelosi P. Modes of mechanical ventilation for the operating room. *Best Pract Res Clin Anaesthesiol.* 2015;29:285–99.
- Kothari A, Baskaran D. Pressure-controlled volume guaranteed mode improves respiratory dynamics during laparoscopic cholecystectomy: a comparison with conventional modes. *Anesth Essays Res.* 2018;12:206–12.
- Pu J, Liu Z, Yang L, Wang Y, Jiang J. Applications of pressure control ventilation volume guaranteed during one-lung ventilation in thoracic surgery. *Int J Clin Exp Med.* 2014;7:1094–8.
- Song SY, Jung JY, Cho MS, Kim JH, Ryu TH, Kim BI. Volume-controlled versus pressure-controlled ventilation-volume guaranteed mode during one-lung ventilation. *Korean J Anesthesiol.* 2014;67:258–63.
- Assad OM, El Sayed AA, Khalil MA. Comparison of volume-controlled ventilation and pressure-controlled ventilation volume guaranteed during laparoscopic surgery in Trendelenburg position. *J Clin Anesth.* 2016;34:55–61.
- Kang WS, Oh CS, Kwon WK, Rhee KY, Lee YG, Kim TH, et al. Effect of mechanical ventilation mode type on intra- and postoperative blood loss in patients undergoing posterior lumbar interbody fusion surgery: a randomized controlled trial. *Anesthesiology.* 2016;125:115–23.
- Jo YY, Kim JY, Kwak YL, Kim YB, Kwak HJ. The effect of pressure-controlled ventilation on pulmonary mechanics in the prone position during posterior lumbar spine surgery: a comparison with volume-controlled ventilation. *J Neurosurg Anesthesiol.* 2012;24:14–8.
- Marini JJ, Ravenscraft SA. Mean airway pressure: physiologic determinants and clinical importance-part 1: physiologic determinants and measurements. *Crit Care Med.* 1992;20:1461–72.
- Dharmavaram S, Jellish WS, Nockels RP, Shea J, Mehmood R, Ghanayem A, et al. Effect of prone positioning systems on hemodynamic and cardiac function during lumbar spine surgery: an echocardiographic study. *Spine.* 2006;31:1388–93.
- Pinsky MR. Recent advances in the clinical application of heart-lung interactions. *Curr Opin Crit Care.* 2002;8:26–31.
- Fantoni DT, Ida KK, Lopes TF, Otsuki DA, Auler JO Jr, Ambrósio AM. A comparison of the cardiopulmonary effects of pressure controlled ventilation and volume controlled ventilation in healthy anesthetized dogs. *J Vet Emerg Crit Care.* 2016;26:524–30.
- Balick-Weber CC, Nicolas P, Hedreville-Montout M, Blanchet P, Stéphan F. Respiratory and haemodynamic effects of volume-controlled vs pressure-controlled ventilation during laparoscopy: a cross-over study with echocardiographic assessment. *Br J Anaesth.* 2007;99:429–35.
- Argueta E, Berdine G, Pena C, Nugent KM. FloTrac® monitoring system: what are its uses in critically ill medical patients? *Am J Med Sci.* 2015;349:352–6.
- Grensemann J, Bruecken U, Treszl A, Wappler F, Sakka SG. The influence of prone positioning on the accuracy of calibrated and uncalibrated pulse contour derived cardiac index measurements. *Anesth Analg.* 2013;116:820–6.
- Manna EM, Ibraheim OA, Samarkandi AH, Alotaibi WM, Elwatidy SM. The effect of prone position on respiratory mechanics during spinal surgery. *Middle East J Anaesthesiol.* 2005;18:623–30.

## Publisher's Note

Springer Nature remains neutral with regard to jurisdictional claims in published maps and institutional affiliations.